



21/10/2021

Dear Resident,

Glenroy Station and rail trench night works

The Victorian Government is removing the level crossing on Glenroy Road and building a new Glenroy Station. The level crossing will be removed by lowering the rail line under Glenroy Road.

From **Sunday 24 to Thursday 28 October** and **Thursday 4 to Saturday 6 November** between **5pm to 3am each night**, works will continue on the new Glenroy Station and within the rail trench.

What to expect

Every effort is made to minimise night-time noise including undertaking noisier works during the day. However due to the requirement to complete these works at night you may notice:

- a mobile crane lifting steel beams and construction materials into the rail trench at the new Glenroy Station
- temporary night-time lighting
- construction workers, excavators and trucks within the rail trench

Construction workers will move progressively within the rail trench to complete the works.

If at any time our works significantly disturb you, please contact us on 1800 105 105.

Health and Safety

Works are continuing safely on Glenroy Level Crossing Removal Project with COVID Safe plans in place to help protect workers and the community.

Strict processes are in place to check and record the vaccination status of workers entering construction sites.

For more information about coronavirus COVID-19, please visit coronavirus.vic.gov.au

Keep in touch

To keep up to date on the project, we encourage you to sign up for email updates at levelcrossings.vic.gov.au/subscribe and to sign up for SMS updates by texting **GLENROY** to **0428 581 917**.

If you have any questions or require more information about these works, please contact us via email: contact@levelcrossings.vic.gov.au or phone: **1800 105 105**, 24 hours, 7 days.

Thank you for your patience.

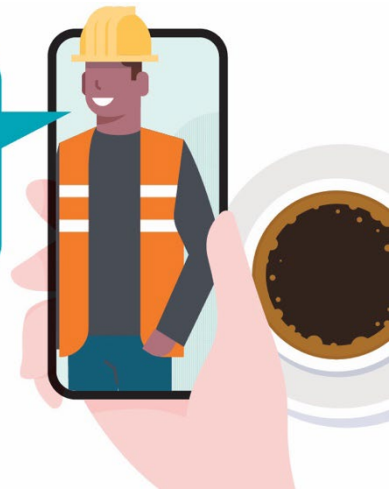
Kind regards,

The Glenroy Level Crossing Removal Project



**STAY UP TO DATE
ON OUR WORKS**

Scan the QR code or text **GLENROY** to **0428 581 917**
to sign up for SMS updates about the
Glenroy Level Crossing Removal Project



CONTACT US

levelcrossings.vic.gov.au
contact@levelcrossings.vic.gov.au
1800 105 105

Level Crossing Removal Project,
GPO Box 4509, Melbourne VIC 3001

     @levelcrossings



Translation service – For languages
other than English, please call 9280 0780

Please contact us if you would like
this information in an accessible format.

If you need assistance because of
a hearing or speech impairment,
please visit relayservice.gov.au

**VICTORIA'S
BIG BUILD**



Authorised and published by the Victorian
Government, 1 Treasury Place, Melbourne