

Pavement Markers for Outdoor Dining B200.01



DESIGN STATEMENT

Stainless steel delineation markers are provided to give greater recognition of permitted trading zones and the required pedestrian access.

APPLICABLE LOCATION

To be distributed on main retail streets and public spaces to delineate permitted trading zones and pedestrian zones, as specified.

COUNCIL STANDARD DRAWING

N/A

CROSS REFERENCE DOCUMENT

- Moreland Private and Commercial Use of Public Places Policy - Appendix B Footpath Declared Area Guidelines

STANDARD SPECIFICATION

Installation: Markers to be placed at approximately 1m intervals and denoting the corners. Location should be marked with chalk and confirmed with Council officers prior to permanent installation.

Marker: Extruded solid 316 marine grade stainless steel with 35mm diameter and 10mm thickness. Moreland logo to be manually engraved with the whole circle logo recessed 0.5mm and not painted black.

Stainless Steel manufacture and epoxy resin supply and installation shall be to relevant Australian standards, including AS/NZS IEC 60825, ASTM A240M for chromium and chromium nickel stainless steel plate, sheet and strip for pressure vessels and general application.

SUPPLIER

Please note the markers are always to be supplied by Council. Manufactured by Advanced Cutting Technology.

MAINTENANCE

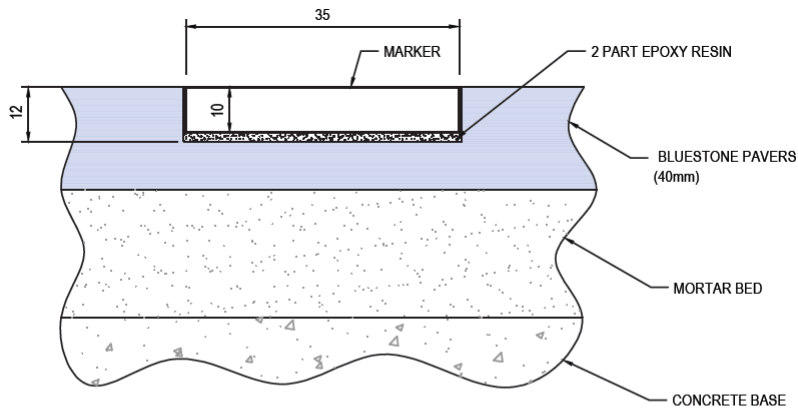
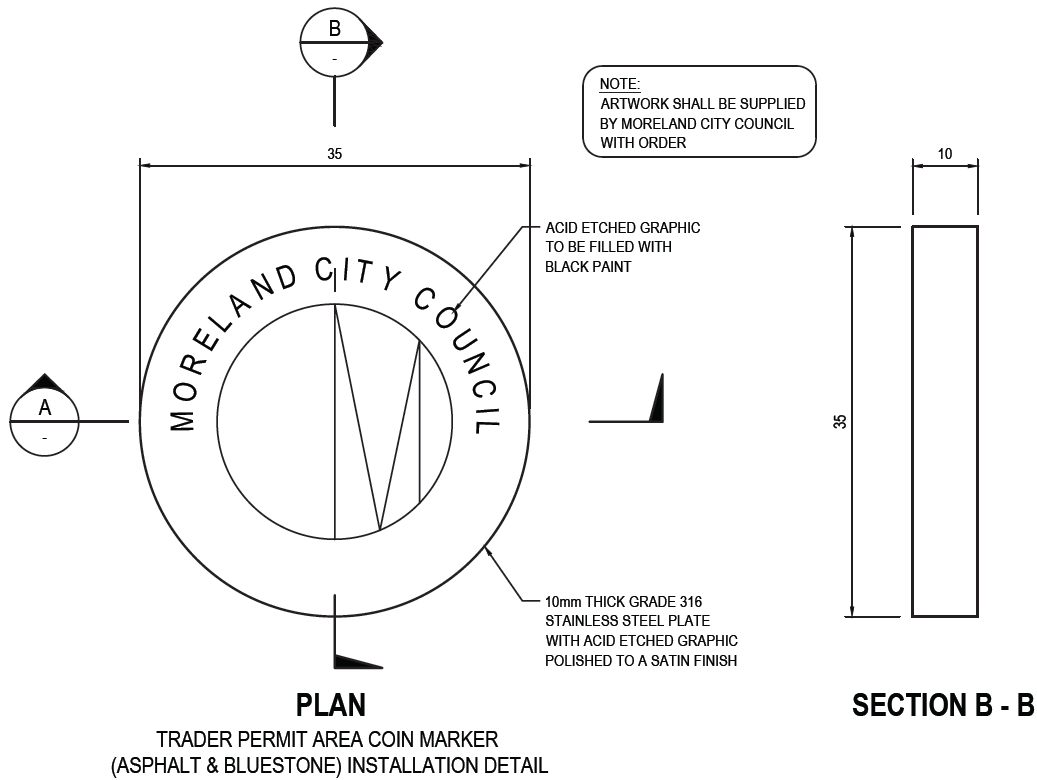
Street Cleansing Unit: Cleaning will be undertaken as per current schedule. Occasional cleaning with water and mild detergent may be required.

GENERAL NOTE

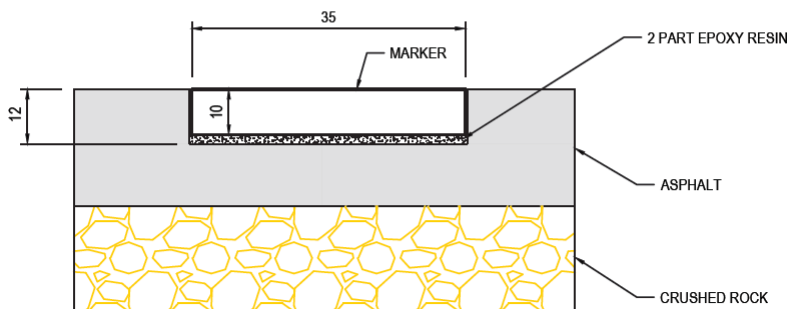
1. *Installation on Bluestone or granite pavers:* Use 35mm diameter (stone) drill bit to depth of approximately 12mm (max13mm). Fill hole with two part epoxy (1-2mm depth) and insert marker into the hole flush with the surface. Avoid wiping excess epoxy onto blue stone paver surfaces.
2. *Installation on Asphalt:* Use 35mm diameter drill bit to depth of approximately 12mm (max13mm). Fill hole with two part epoxy (1-2mm depth) and insert marker into the hole flush with the surface. Avoid wiping excess epoxy onto asphalt surfaces.



B200.01 Pavement Markers for Outdoor Dining



SECTION A - A (BLUESTONE PAVER)



SECTION A - A (ASPHALT)