

Steel Kerb and Channel A131.01



DESIGN STATEMENT

Steel kerb grates incorporating raingarden sections allow a greater capture of stormwater from the road. They provide a bold statement along Pascoe Vale Road Glenroy.

APPLICABLE LOCATION

Glenroy Activity Centre: Pascoe Vale Road between Gladstone Parade and Finchley Avenue.

COUNCIL STANDARD DRAWING

N/A

CROSS REFERENCE DOCUMENT

- Glenroy Activity Centre Streetscape Masterplan

STANDARD SPECIFICATION

Colour: Colour to be confirmed with Council.

Material: The kerb uses pre-assembled elements made from steel.

Fixing: The kerb is attached onto the cast in-grate frame with a hinge. Allowing the steel kerb to be lifted for cleaning purpose.

SUPPLIER

Quality Steel Welders

MAINTENANCE

Road Maintenance Unit: Repair failed areas of pavement with similar steel kerb grates.

Street Cleansing Unit: Cleaning will be undertaken as per current schedule. The steel kerb gate is hinged to allow easy of cleaning.

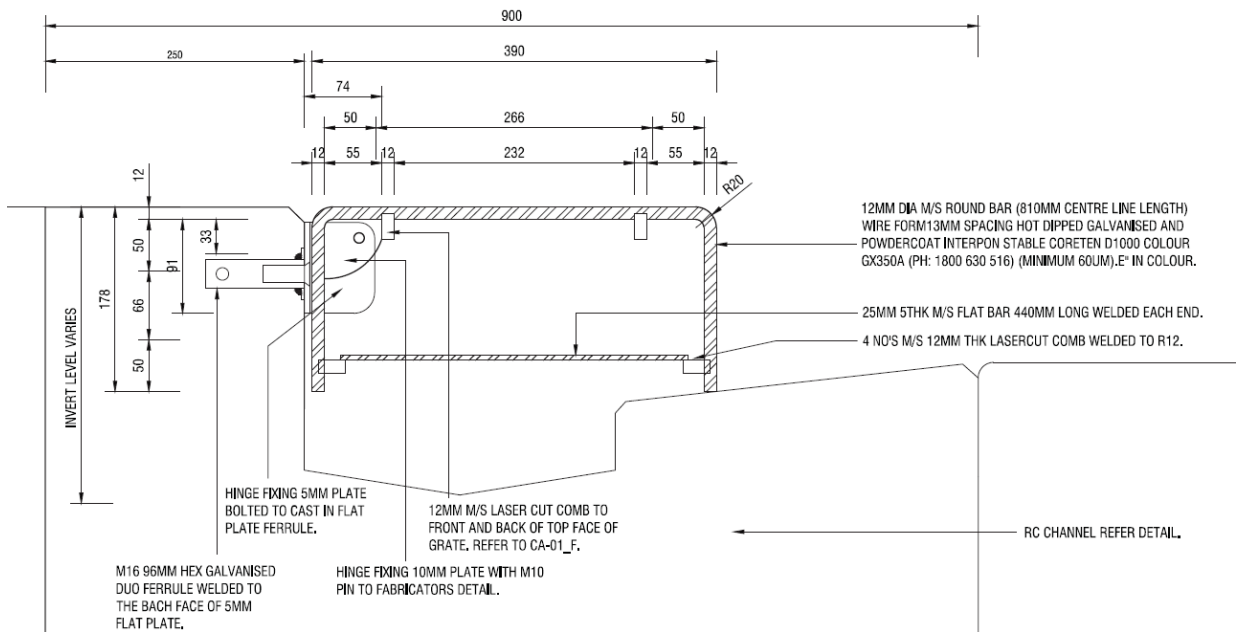
Open Space Maintenance Unit: To be weed sprayed if weeds occur.

GENERAL NOTES

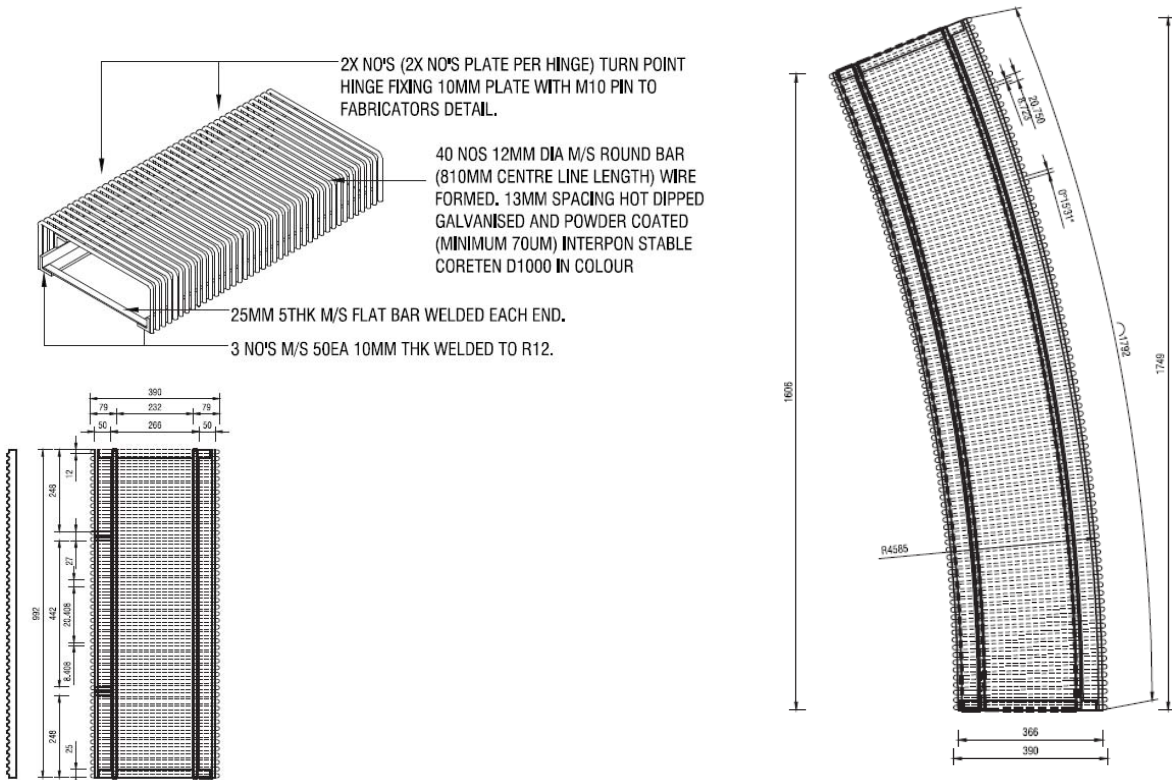
1. Refer to manufacturer's installation manual



A131.01 Steel Kerb and Channel



Typical steel grate and channel detail



Steel Grate Type 1 (Straight)
Copyright: Enlocus

Steel Grate Type 1 (Radial)