



Moreland City Council

# BONWICK STREET STREETSCAPE UPGRADE COMMUNITY ENGAGEMENT SUMMARY

DRAFT CONCEPT DESIGN - NOVEMBER 2018



## HOW DID WE ENGAGE?

- 6801 letters** were sent to local addresses
- 'Have Your Say' survey** was open online for 4 weeks
- 3 drop-in sessions** were held on site in October
- City News** advertisement in the Moreland Leader
- 3 Facebook posts**

Consultation material was made available in **5 major language groups**

## WHO PARTICIPATED?

Participants included business owners, residents, workers, visitors and community group attendees.

**104** people gave feedback on the concept design

**378** people signed a community led petition

## HOW DID THEY PARTICIPATE?

**60** people attended a drop-in session

**46** people completed a 'Have Your Say' survey online

**16** traders completed a 'Have Your Say' survey

**19** people contributed on Facebook

## WHAT DID THEY TALK ABOUT?

Amount of parking (parking availability)  
 Parking enforcement  
 Traffic management and flow  
 Sustainable transport  
 Access to public transport



**Parking,  
Traffic &  
Transport**

Street trees  
 Improved public spaces and facilities  
 Management of public spaces and facilities



**Open  
Space**

Seating and furniture  
 Water sensitive urban design (WSUD)  
 Pedestrian priority spaces



**Urban  
Design**

Improve shop fronts  
 Footpath trading



**Economic  
Development**

Antisocial behaviour  
 Increased policing  
 Introduce CCTV



**Community  
Safety**

## HOW IS COUNCIL RESPONDING?

### • Council Meeting - 14 November 2018

The community led petition will be acknowledged by Council.

### • Council Meeting - 12 December 2018

Council officers will seek clarity on the projects next steps.

- The drop-off zone will be changed to 15-minute parking spaces.

- Trees with a large canopy will be prioritised.

- Public space improvements will cater for all abilities.

- Low maintenance plants will be chosen.

- Furniture with arm and back rests will be prioritised.

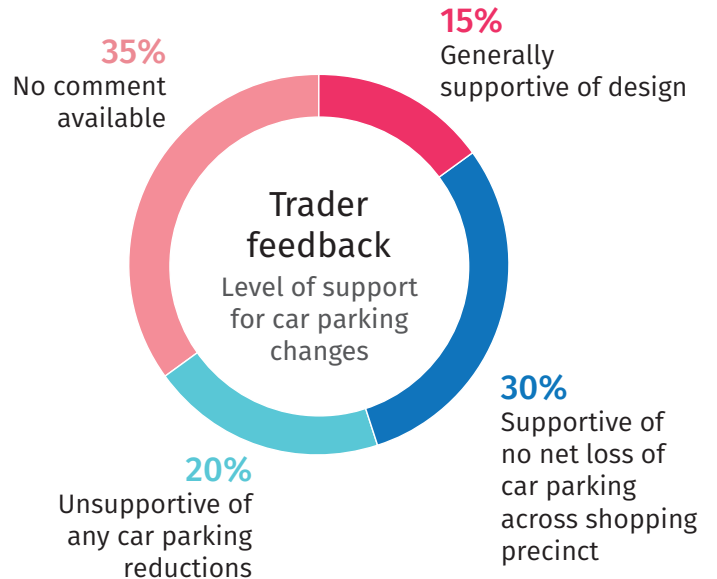
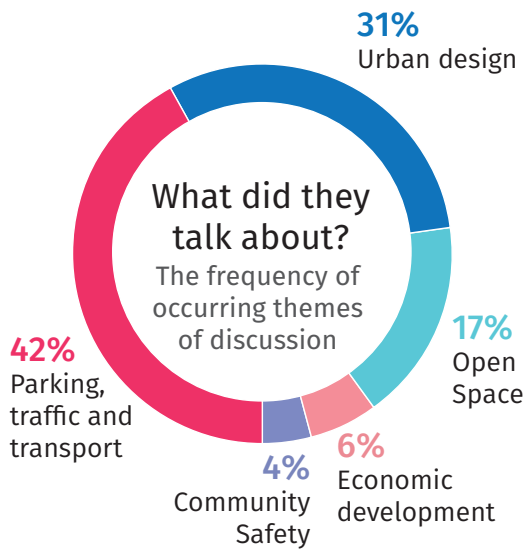
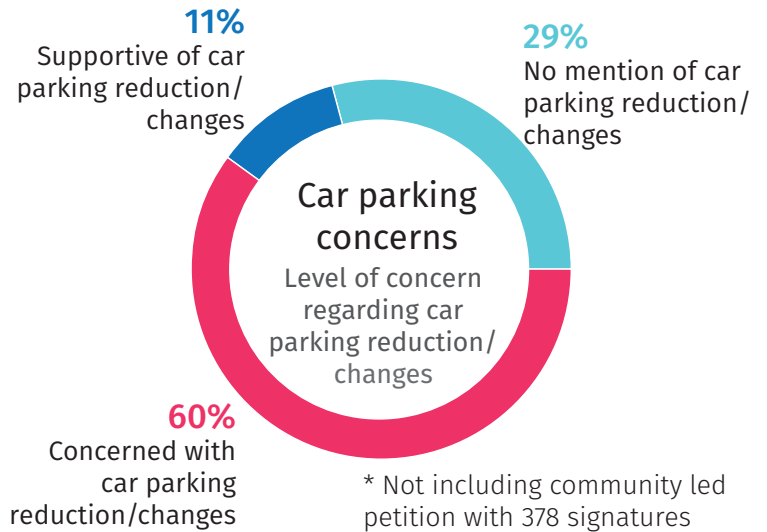
- Designated pedestrian priority spaces will be maintained and will incorporate seating, landscaping and shading where possible.

- Engage with traders to enhance their shop appearance.

- Use markers on the footpath to show where footpath trading can occur.

- Speak with Community Police to seek advice on concept design.

## ENGAGEMENT OUTCOMES



### Top 6 things that people liked about the proposed design



Zebra crossing



New trees



All improvements



Furniture upgrade



Pedestrianised laneways



Improved lighting



### Top 6 suggestions to improve the design



Shading in laneway



Increased parking enforcement



Bike parking



Additional parking



Close Bonwick Street to vehicles



Improve signage



Moreland City Council

### Moreland Language Link

廣東話	9280 1910	हिंदी	9280 1918
Italiano	9280 1911	普通话	9280 0750
Ελληνικά	9280 1912	ਪੰਜਾਬੀ	9280 0751
عربي	9280 1913		
Türkçe	9280 1914	All other languages	
Tiếng Việt	9280 1915		9280 1919